

STANDARD ONE-PIECE POLYPROPYLENE MOLDINGS

PRODUCT

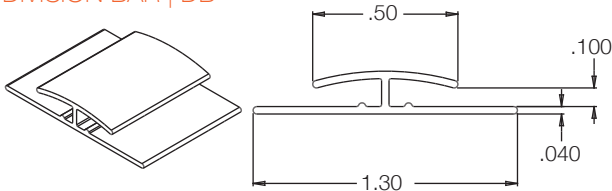
For professional looking panel installations, and maximum moisture sealing effectiveness, use Kemlite one-piece, non-staining, polypropylene moldings.

PURPOSE

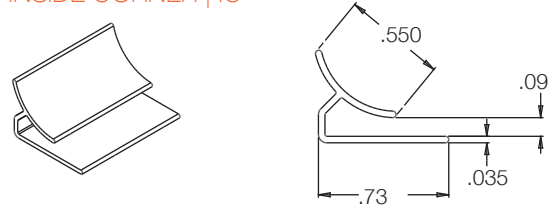
For use with panel thicknesses 0.075" and 0.09". For 0.12" panels use the 2 piece moldings.

NOTE: Images are not drawn to scale and are depicted in inches

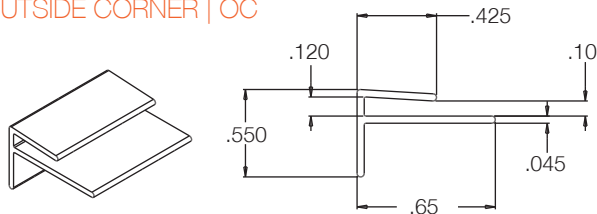
DIVISION BAR | DB



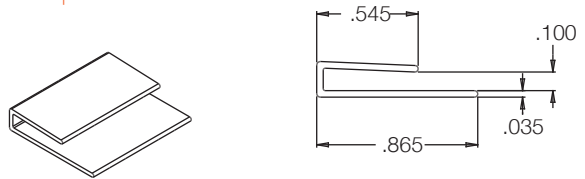
INSIDE CORNER | IC



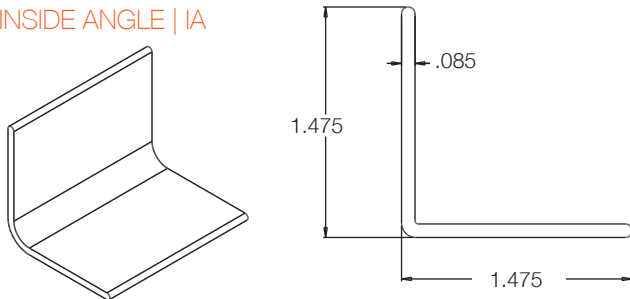
OUTSIDE CORNER | OC



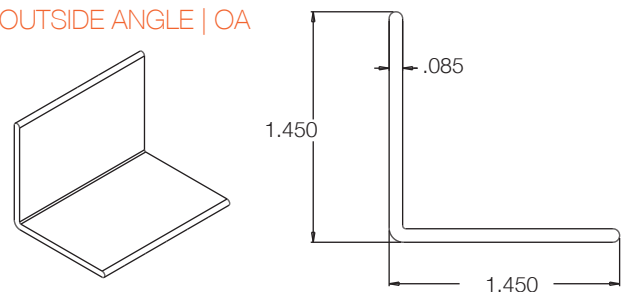
CAP | CP



INSIDE ANGLE | IA



OUTSIDE ANGLE | OA



When installing outside and inside angles to FRP panels, use Crane Advanced Polymer Panel Adhesive. Acrylic, epoxy or urethane based adhesives should be used to provide an adequate bond. Silicone sealant is not meant to be used as an adhesive and will not properly bond the angle to the FRP panel.

STANDARD NYLON DRIVE RIVETS

PRODUCT

Non-staining nylon drive rivets in matching panel colors are designed for quick and easy installation using only a hammer and drill. When used with silicone sealants, drive rivets maintain an effective moisture seal as well as providing excellent mechanical fastening for panels.

PURPOSE

See table for rivet size and corresponding panel thickness.

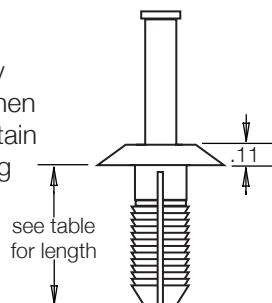


TABLE A		
PANEL THICKNESS	RIVET LENGTH	AVAILABLE COLORS
0.09" to 0.125" 2.29 mm to 3.18 mm	0.75" 19.05 mm	White, Cream, Beige, Silver,
0.09" to 0.25" 2.29 mm to 6.35 mm	1" 25.40 mm	White





LAMINATED MOLDINGS

STANDARD ONE-PIECE POLYPROPYLENE MOLDINGS

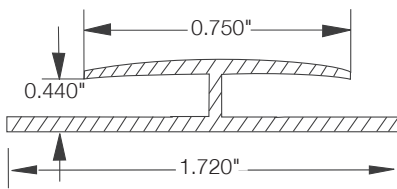
PRODUCT

For professional looking panel installations, and maximum moisture sealing effectiveness, use Kemlite one-piece, non-staining, pvc moldings.

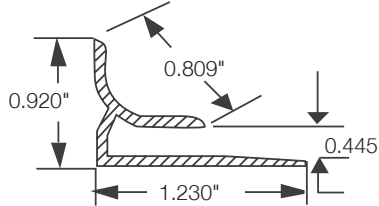
PURPOSE

For use with laminated panel thicknesses up to 0.437".

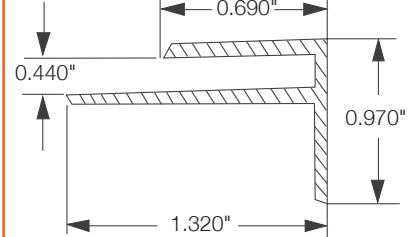
DIVISION BAR | DB



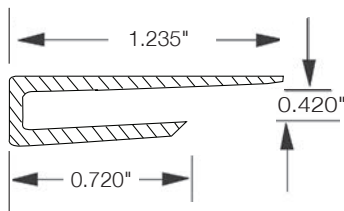
INSIDE CORNER | IC



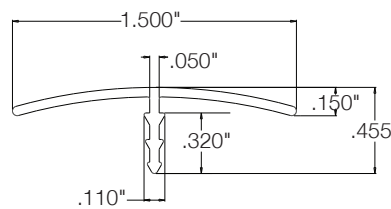
OUTSIDE CORNER | OC



CAP | CP



T-BAR | TB *



* T-Bar is extruded Polypropylene

Inside and Outside Angles are also available for Kemply Laminated installations. Please refer to Standard One-Piece Polypropylene Moldings on the other side of this page for dimensions

TWO-PIECE SURFACE MOUNT MOLDINGS

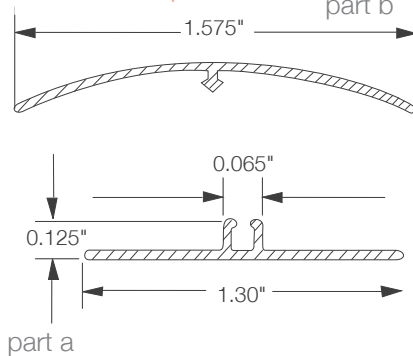
PRODUCT

For professional looking and convenient installations, use two-piece snap-on trim, non-staining, pvc moldings. Available in white only. Use for all thicknesses.

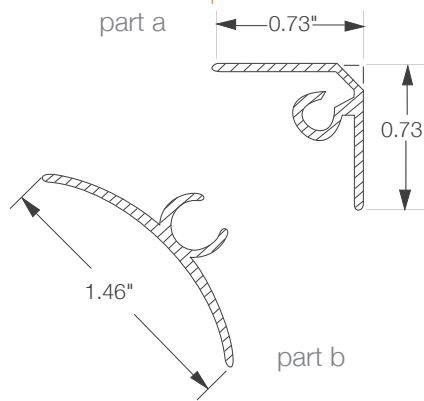
PURPOSE

Improved installation time. Panel and molding can be installed in separate operations. Screws can be used to secure base and panel. Holes must be oversized.

DIVISION BAR | DB



INSIDE CORNER | IC



OUTSIDE CORNER | OC

