



altro

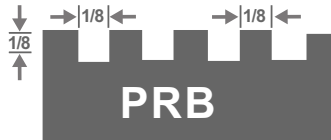
Installation guide for Altro Puraguard

Altro Puraguard wall panels are smooth, durable, cleanable, and easy to install. Altro Puraguard is available in 4'x 9' and 4'x10' panel sizes and includes a variety of connectors, reducers, and corner accessories. This makes Altro Puraguard extremely efficient and easy to install. This greatly minimizes downtime a must for busy commercial kitchens!

Adhesives and trowel notches

Altro W157, a water-based acrylic adhesive, is suitable for surfaces in dry, climate controlled areas and may only be used with absorbent substrates (drywall, wood, porous concrete/block).

Altro W39, a two-part polyurethane adhesive, is suitable for wet areas, non climate controlled areas and for all absorbent and non-absorbent surfaces. When in doubt, use this adhesive.



Altro W147, a versatile water-based acrylic blend spray adhesive, is suitable for surfaces in dry climate controlled areas and for most all absorbent and non-absorbent surfaces.

Altro W157 acrylic adhesive, Altro W39 two part polyurethane adhesive and Altro W147 spray adhesive are recommended for installations. See substrate chart below to determine the proper adhesive to be used.

Use only approved adhesives and trowel notches as recommended by Altro. Consult the adhesive label for detailed application instructions. The recommended trowel notch for most applications is PRB 1/8th.

Priming may be necessary for very absorbent or dusty substrates. Use one coat of a PVA primer (Valspar, Glidden, or equal).

Adhesive spread rate for W157 and W39 is approximately 50 sq ft per gallon. Coverage rate for W147 spray is approximately 72 sq ft per can.

Storage and handling

If storage temperature is below 68°F (20°C), Altro materials must be moved to a warmer place and allowed to reach this temperature before installation. The room temperature must not be below 68°F (20°C) and the wall substrate temperature between 65°F (18°C) and 80°F (27°C).

- Altro Puraguard, Adhesives, and Accessories must be stored in enclosed dry conditions and not subjected to freezing or excessive heat. Heat above 140F will distort and damage the material, cold temperatures will make the material brittle and temperatures below 23F should be avoided during the storage process.
- When stacking pallets they should not be stacked more than 8 pallets high and stacked flat without bumps or rolls and in a square and well aligned configuration, safety precautions should be taken to secure pallets to prevent shifting or falling.
- Eye protection should be used and care taken during cutting, fitting, and thermoforming procedures.
- If more than one pallet of material is used, use material in sequence.
- Panels and all other materials should be moved into the acclimated worksite 72 hours prior to installation.

Adhesive selection *additional notes*

Substrate	Altro W39 two-part adhesive	Altro W157 acrylic adhesive	Altro W147 spray adhesive
Drywall minimum 1/2" thick	A and B	A, B, and D	A and B
Plywood minimum 3/8" thick	B and E	B and E	B and E
Metal	First choice	Not recommended	Alternative choice
Plaster	B and E	B and E	B and E
Smooth concrete	B	B	B
Painted	C	D	C

- (A) All gypsum joint compound needs to be primed with PVA primer.
- (B) Very absorbent surfaces must be primed with one coat of a PVA primer.
- (C) A bond test is advisable to check adhesive does not react with paint.
- (D) Altro W157 should not be used for bonding to moisture resistant substrates.
- (E) Test for moisture with a GE Protimeter, which should give a maximum reading of 16% wood moisture equivalent (WME).

- Panels and all other materials must be checked for defects before installation. Do not install materials with visible defects.
- Check carefully to see that panels match in shade. If a shade match cannot be accomplished, do not install. Contact your Altro distributor.

Surface preparation

Altro Puraguard panels must be installed on solid substrates. Ensure that the area is smooth, clean, dry, and flat. Any debris, loose paint, plaster, and dust must be removed. For ease of installation, seal all porous surfaces with a PVA primer before installation.

Cutting and fitting

Altro Puraguard PVC panels can be cut by many different means. The most effective cutting method is by using a carbide-tipped fine-toothed circular saw. For cut-outs, such as switches, outlets and rectangular shapes use a jig saw or oscillating multi tool. For pipe penetrations or round shapes, use a step drill bit or fine tooth hole saw. Be sure to leave a minimum 1/16" gap at all moldings, openings, fastener holes, terminations, and panel edges. Do not fit panels tightly. Always wear proper personal protective equipment when handling, cutting, and installing panels.

Molding installation

Cut panels to fit with minimum 1/16" gap at top and bottom of panel. When using panel moldings install as follows:

A826 Internal/external corner

Use this molding at either inside or outside corner locations to finish off panel edge. For inside corner installation, place a 1/4" bead of sanitary sealant behind molding piece to seal to substrate. Insert panel into trim piece on one side and overlap trim piece on other. Place a 1/8" bead of sanitary sealant where panel will overlap trim piece. For outside corner installation, install panel on one side of corner and place a 1/4" bead of sanitary sealant on substrate at outside corner location. Insert molding piece into corresponding panel to be installed at outside corner and place a 1/8" bead of sanitary sealant on back side of molding.

A839 External cover

Install both left and right side panels to within 1/8" of outside corner. Apply 3/8" beads of sanitary sealant to full length of both sides of corner where it will come in contact with panels. When applying sealant, keep 1/4" spacing away from the perimeter of the molding piece to avoid excessive adhesive on face of panel. Apply A839 to outside corner and roll both sides. To help hold the molding in place use a non-marring tape applied horizontally until sealant has cured.

A840 Altrotite gasket trim

This trim piece is used to smoothly transition between panels in dry areas only. After panel and molding has been cut to fit, peel off protective paper on one side of trim piece. This will leave the pre-applied adhesive exposed. Install molding directly against panel at seam location. Install panel. For corresponding panel (and all subsequent panels requiring this joining method) Altrotite is to be installed on the leading edge of the panel before adhesive application. The opposite edge of the panel must be kept clean and free of adhesive as this will be adhered to the Altrotite gasket trim already installed on the previous panel.

G731 One-part joint strip

While preparing the first panel, bevel the butting edge. Attach the one

part joint so that it is tight against the panel edge. Adhere and place on wall. Use three horizontal rows of 1" double sided tape. Lay the next panel (prepared the same way) onto the exposed back leg of the joint strip. Tap the G731 toward the second panel so the face overlaps both panels equally.

G733 Start/stop edge trim

Use this molding to finish off panel at top or sides.

A861 Stainless steel outside corner

Install both left and right side panels to within 1/8" of outside corner. Apply 3/8" beads of sanitary sealant to full length of both sides of corner where it will come in contact with panels. When applying sealant, keep 1/4" spacing away from the perimeter of the molding piece to avoid excessive adhesive on face of panel. Apply molding to outside corner and roll both sides. To help hold the molding in place use a non-marring tape applied horizontally until sealant has cured.

C8 Cap tile strip

This accessory is used on all Altro Puraguard installations where a water-tight joint is required. The Altro sheet flooring or equivalent should be covered up the wall and finished into the bottom half of the C8 Cap strip. The Altro Puraguard panel sits on top of the strip and is sealed with sanitary sealant.

Panel installation

Wipe back of panel with antistatic spray and a cloth prior to adhesive application. Using appropriate adhesive and trowel, spread the back of the panel from side-to-side and from top to bottom. If using Altrotite gasket trim, apply trim piece to appropriate seam location on panel before applying adhesive. Keep adhesive 1" away from panel seam edge where the panel will be installed against a previously installed Altrotite gasket trim piece. Unless otherwise noted and for all trim pieces, adhesive must be installed to within 1/8" of trim and panel edges. If overlapping any existing flooring or non-porous base system apply 3/4" beads of sanitary sealant to back of panel along the bottom 2" of the panel.

Fixture installation

Allow adhesive to set a minimum of 24 hours or until panels are firmly bonded to wall prior to fixture installation. When installing fasteners through a finished and completed Altro Puraguard installation make sure to leave a minimum 1/16" gap all the way around the fastener to allow for panel expansion and contraction.

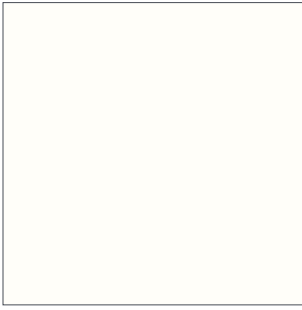
Sealing Altro Puraguard panels

Place a continuous bead of sanitary sealant along all panel edges and protrusions upon completion of installation. To remove excess sealant use de-natured alcohol immediately.

Cleaning

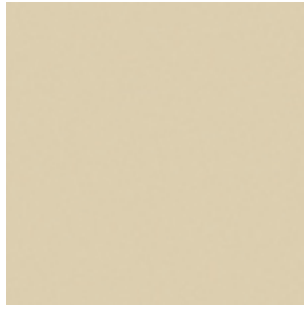
Clean up any wet acrylic adhesive and/or wet spray adhesive with soap and water. Polyurethane adhesive as well as excess sanitary sealant must be cleaned immediately with de-natured alcohol. After installation, remove protective plastic coating and wipe down with antistatic solution or wipes. Panels may be cleaned with Altroclean 44 cleaner and a microfiber towel.

Color availability



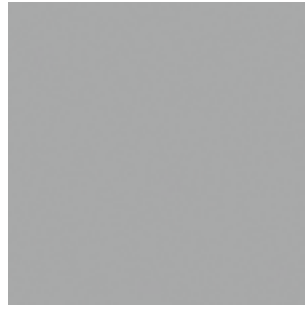
White
9' x 4' panel
10' x 4' panel

LRV 89
W139
W135



Barley
9' x 4' panel
10' x 4' panel

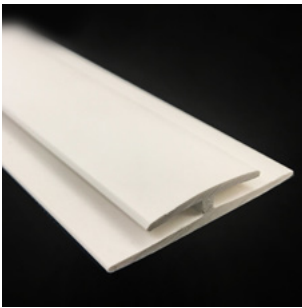
LRV 55
W140 / 300
W141 / 300



Pepper
9' x 4' panel
10' x 4' panel

LRV 36
W140 / 301
W141 / 301

Accessories



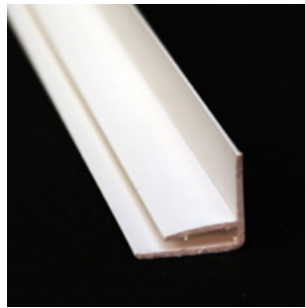
One-part Joint Strip 10'
White
Barley
Pepper

G731 / 30
G731 / 300
G731 / 301



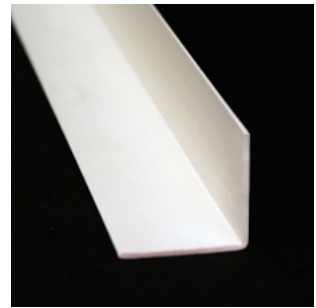
Start + Edge Trim 10'
White
Barley
Pepper

G733 / 30
G733 / 30 / 300
G733 / 30 / 301



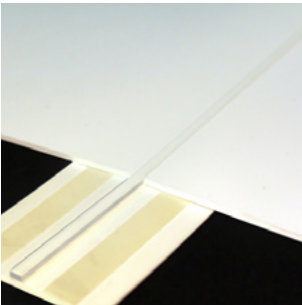
Internal / External Corner 10'
White
Barley
Pepper

A826 / 30
A826 / 30 / 300
A826 / 30 / 301



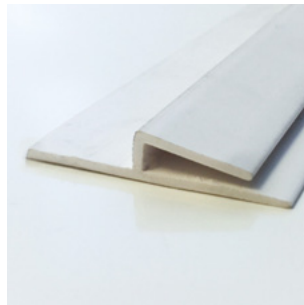
External cover 10'
White
Barley
Pepper

A839 / 30
A839 / 30 / 300
A839 / 30 / 301



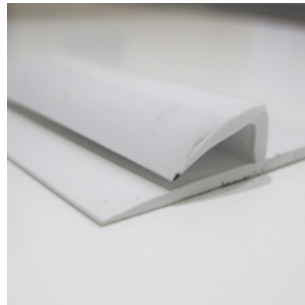
Altrotite Gasket 10'
White
Barley
Pepper

A840 / 30
A840 / 300
A840 / 301



C4 Cap strip 8'2''
White

ASF C4 CAP



C8 Cap strip 8'2''
White

ASF C8 CAP



Stainless steel corner protector

A861

For dry areas only